

VEHICLE ACCESSORIES & PARTS CATALOG



NEW



Portable Cooler



Sunny Technologies Co.,Ltd.



Company Profile & History

Sunny Technologies Co., Ltd. was founded in 1985. We started from computer cases and power supplies. With 30 years experiences of exporting, that is the reason why we have got good reputation worldwide.

From 2007, we expanded our product line to bike and vehicle accessories. We have been dedicating to research different types of bike carries from interior to external application, which is including bike carrier, bike rack, bike accessories, and vehicle accessories.

From 2014, we develop more outdoor relative products, which is including fishing, water activities, and cooling maker (portable air conditioner can be used inside a vehicle, a dining car, a camping car, or a tent, and also fit into small spaces in the office, bedroom, or living room). Our aim is to provide best quality, service, and competitive products.

Under the continuous efforts of our team, we've won the trust and reputation from OEM and ODM customers. Our customers are worldwide and appreciate our good supports.

Welcome contact us!



Content

VEHICLE ACCESSORIES and PARTS

■ Portable Cooler	3
■ Inverter	4~5
■ Battery Charger	6~7
■ Net.....	8~9
■ Car Appliance	10
■ Curtain	11
■ In Car Accessories	12
■ Roof Type Accessories	13~17
■ Rear Type Accessoriesr	18
■ Trailer Lamp & Lead Acid Battery	19
■ Bolt & Nut	20~21
■ Vehicle Accessories	22
■ Sleeve Nut for Truck and Bus	23

Portable Cooler



SC-10-001-2 EX

Cooling Maker, Air Cooler, Portable Air Cooling System for Car

Portable Air Conditioner Fan with 12V Cigarette Lighter Plug

Suitable Usage: In the Certain Space, Such as Car or Tent

Cooling Ability: Compared to Certain Spaces, the Temperature Drops 5°C to 8°C

Product Dimension: (L) 57.3cm x (W) 30cm x (H) 31cm

Weight: N.W.: 4.87 KGS / G.W.: 5.74 KGS

Capacity: 18 L

Patent no.: I656306



Cooling ability: Compared to certain spaces, the temperature drops Air cooler only use 12V cigarette lighter plug or portable power bank (battery) to supply power. It can be used for cars and tents, it also fits small spaces such as office, bedroom etc. The used water can reuse to water flowers or make ice bricks again. It is electricity-saving and eco-friendly.

Description

Cooling Maker SC-10-001 works like a home air conditioner, but with more flexible uses. It can be used inside a vehicle, a dining car, a camping car, or a tent. It can also fit into small spaces in the office, bedroom, or living room.

The basic mechanism of the cooling maker consists of a build-in compact radiator, two fans, and one pump. Pour in water, and add ice cube or ice brick. After the water becomes cold it will rush through the radiator. The fans and pump will then deliver cold air that can lower temperature up to 5° to 8° degree C for up to 4 ~ 7 hours depends on ambient temperature.

Using less than 12W of power, the Cooling Maker is power-saving and environmentally friendly.

Capacity is 18L and voltage is 12V. Accessories include one 12V cigar power cable. When using in a car, the power from cigarette lighter will stop if the engine is turned off. Consumer needs a portable power bank (battery) to keep the cool air flowing.

Cooling maker is easy to operate. With sufficient water & ice (please note that water level should be higher than pump), then turn on the fan speed controller). Soon you will feel the cool air from the vent holes.

Cooling maker is certified with patent of invention under number I656306.

Product Invention Story

In Japan, there are many couples, even retired couples, who will arrange to travel around Japan to enjoy romantic couple life.

During the journey, the most expensive is accommodation, so many travelers will choose to drive or rent a modified car to sleep in the car at night

But on a hot summer night, when the car is stopped and turned off, when the car's air conditioner is not available, it always feels too hot to sleep,

This product has obtained an invention patent. As long as this product is added to ice cubes and water, the temperature can be instantly reduced to 5 ~ 8°C. and enjoy the same cooler air in dry.

Vehicle Accessories

Modified Sine Wave Inverter with Microcontroller (DC to AC)

Application :

With our power inverters output ranging from 600W~3000W, the user can use a variety of AC-powered applications on the go, at areas without regular power outlets, such as:

- Campsites or construction sites, on vehicles including automotive, campervan, caravan, motorhome, RV for activities such as camping, recreation, emergency AC power, job site AC power.
- For business/industrial purposes such as coffee cart, food truck, ambulance, ups system, and off-grid solar system.

Features :

- Microcontroller Integrated
- Compact Design with Aluminum Housing
- LED Indicators for Inverter States
- Input & Output Fully Isolation
- Intelligent Temp & Load Cooling Fan
- Multi Pre-Alarm & Shutdown Alarm Protections:
Battery Type Detection / Polarity Reverse / Low Voltage
Short Circuit / Overheat / Overload
- Made in Taiwan



SE-18-MN-600USB



SE-18-MN-1000



SE-18-MN-1500



SE-18-MN-2000



SE-18-MN-3000

Model		SE-18-MN-600USB	SE-18-MN-1000	SE-18-MN-1500	SE-18-MN-2000	SE-18-MN-3000
System						
Continuous Power		600W	1000W	1500W	2000W	3000W
Surge Power		1500W	2400W	3000W	4000W	6000W
Output Voltage		100/110/120 VAC; 220/230/240 VAC				
Output Waveform		Modified Sine Wave				
Output USB Port		5VDC, 2.1A	-	-	-	-
Standby Current (Normal)	DC 12V	< 0.5A	< 0.6A	< 0.7A	< 0.8A	< 1.0A
	DC 24V	< 0.3A	< 0.5A	< 0.6A	< 0.7A	< 0.9A
Output Regulation		< ±5% Intelligent AVR	< ±5% Intelligent PWM			
Output Frequency		50/55/60 Hz Crystal Controlled				
Input Voltage		DC 12V: 10~15V; DC 24V: 20~30V				
Efficiency		> 85%				
Protection						
Input Type Auto-Detection		YES				
Input Polarity Reverse Prot.		Fuse				
Input Low Voltage Prot.	DC 12V	< 10.5V Pre-Alarm, < 9.5V Shutdown & Alarm				
	DC 24V	< 21.5V Pre-Alarm, < 20V Shutdown & Alarm				
Short Circuit Prot.		YES				
Overheat		> 60°C Pre-Alarm, > 65°C Shutdown & Alarm				
Overload	Pre-Alarm	> 630W	> 1000W	> 1500W	> 2000W	> 3000W
	Auto-off & Alarm	> 660W	> 1100W	> 1600W	> 2100W	> 3100W
Cooling		Intelligent Fan				
Mechanical						
Fuse	DC 12V	25A x 3PCS	20A x 6PCS	25A x 8PCS	20A x 12PCS	25A x 16PCS
	DC 24V	15A x 3PCS	10A x 6PCS	15A x 8PCS	10A x 12PCS	15A x 16PCS
AC Outlets		EU: 1; USA: 2	EU: 1; USA: 3	EU: 1; USA: 3	EU: 2; USA: 4	EU: 2; USA: 4
Dimension (L x W x H) (mm)		215 x 113 x 62	340 x 135 x 79	400 x 135 x 79	356 x 136 x 148	416 x 136 x 148
Net Weight		1.5 kg	2.5 kg	3.3 kg	4.5 kg	5.9 kg
RC (Standard) Accessory		None	Option			

OUTPUT RECEPTACLES:



Vehicle Accessories

Pure Sine Wave Inverter with Microcontroller (DC to AC)

Application :

Pure Sine Wave Power Inverter is perfect for providing reliable AC power to sensitive electronic equipment. With high-efficiency output ranging from 300W~2000W and compact aluminum design, we provide the best value and get the precise AC power to the end-users.

When compared to modified sine wave inverters, pure sine wave inverters are a better way to provide cleaner current with low harmonic distortion. This characteristic is crucial for powering equipment such as medical devices, printers, laptops, digital microwaves, fridges, and other sensitive electronic equipment.

Features :

- Pure Sine Wave Output
- Microcontroller Integrated
- Adjustable Energy Saving Mode
- Input & Output Fully Isolation
- Intelligent PWM Output Regulation
- Intelligent Temp & Load Cooling Fan
- Multi Pre-Alarm & Shutdown Alarm Protections:
Battery Type Detection / Polarity Reverse / Low Voltage
Short Circuit / Overheat / Overload
- Made in Taiwan



SE-18-SN-300USB



SE-18-SN-1000



SE-18-SN-2000

Model		SE-18-SN-300USB	SE-18-SN-1000	SE-18-SN-2000
System				
Continuous Power		300W	1000W	2000W
Surge Power		600W	2000W	4000W
Output Voltage		100/110/120 VAC; 220/230/240 VAC		
Output Waveform		Pure Sine Wave		
Output USB Port		5VDC, 2.1A	-	-
Standby Current (Normal)	DC 12V	< 0.7A	< 1.0A	< 2.0A
	DC 24V	< 0.5A	< 0.8A	< 1.3A
Standby Current (Saving)		-	< 0.1A	< 0.15A
Output Regulation		< ±5% Intelligent PWM		
Output Frequency (50/60 Hz)		Crystal Controlled		Switchable by DIP
Input Voltage		DC 12V: 10~15V; DC 24V: 20~30V		
Efficiency		> 90%	> 85%	> 80%
Protection				
Input Type Auto-Detection		YES		
Input Polarity Reverse Prot.		Fuse		
Input Low Voltage Prot.	DC 12V	< 10.5V Pre-Alarm, < 10V Auto-off & Alarm		
	DC 24V	< 21.0V Pre-Alarm, < 20V Auto-off & Alarm		
Short Circuit Prot.		YES		
Overheat		> 60°C Pre-Alarm, > 65°C Auto-off & Alarm		
Overload	Pre-Alarm	> 300W	> 1000W	> 2000W
	Auto-off & Alarm	> 330W	> 1200W	> 2400W
Cooling		Intelligent Fan		
Mechanical				
Fuse	DC 12V	35A x 1PCS	25A x 6PCS	25A x 12PCS
	DC 24V	20A x 1PCS	20A x 6PCS	15A x 12PCS
AC Outlets		EU: 1; USA: 2		EU: 2; USA: 3
Dimension (L x W x H) (mm)		205 x 91 x 65	360 x 195 x 80	423 x 177 x 153
Net Weight		1 kg	3.6 kg	7.8 kg
RC (Standard) Accessory		None	Option	-
RC (LED) Accessory		None	-	Option

OUTPUT RECEPTACLES:



RC

Applicable Series :
SE-18-MN Series,
SE-18-SN Series

RC-LED



Applicable Series :
SE-18-SN-2000



Model	RC (Remote Controller)	RC-LED (Remote Controller)
Mechanical		
Cable Length	5m	5m
Cable Pin	4 pins	8 pins
Dimension (LxWxH)	75 x 69 x 25 mm	110 x 70 x 28 mm
Net Weight	0.13 kg	0.19 kg

Car Electronics

AC to DC Battery Charger

- 2A ~ 100A
- Multirate chargers with auto setup

Applications:

- Communication devices
- Vacuums Pumps
- Fire trucks
- Household items
- Power generators
- Sailing boats
- Emergency vehicles
- Communication equipments
- UPS
- Fork-lift
- Electrical car and bicycle
- Automobiles
- Mobile command centers
- Power Inverters
- Ambulance
- Others...



SE-11 2A ~ 3A Series Battery Charger

- 3 Stage Charge Control (Fast/Normal/Float)
- Automatic transfer to Float Voltage on Full charge
- Reverse Polarity Protected
- Short Circuit Output Protected
- Universal Input 100V ~ 240V
- LED Charge Indicators Included
- Comes with Mains Lead
- Compliant to LVD & EMC safety standards
- RoHS & CE Directive Compliant

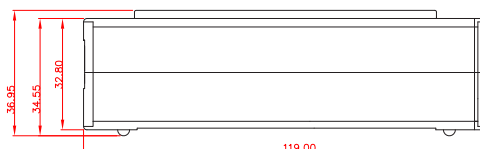
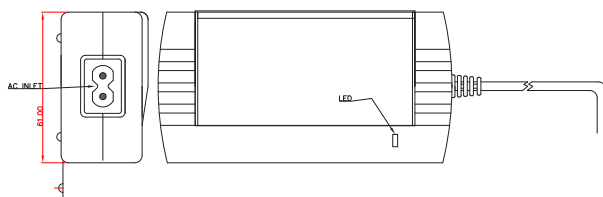
DC Lead Acid Battery Charger fitted with crocodile clips as standard
(It can specific by different cost)

12V Models (Float voltage / Buk Voltage Can Specific by Order)				
Model Number	Float Voltage	Bulk Voltage	Output Current	Material
SE-11-0212A	13.7V	14.6V	2A	Plastic Case
SE-11-0312AM	13.7V	14.6V	3A	Plastic Case

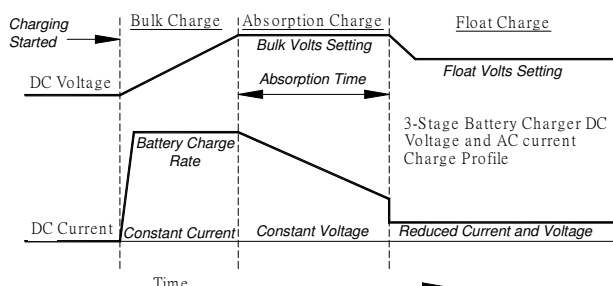
24V Models (Float voltage / Buk Voltage Can Specific by Order)				
Model Number	Float Voltage	Bulk Voltage	Output Current	Material
SE-11-0224A	27.4V	29.2V	2A	Plastic Case



Mechanical Drawings



Charge Curve



Please advise following information for offering prices:

1. DC connector type
2. AC plug type
3. Battery Capacity
4. Expect Charging Time

Car Electronics

SE-11 3A ~ 12A Series

Battery Charger

- 3 Stage Charge Control (Fast/Normal/Float)
- Automatic transfer to Float Voltage on Full charge
- Reverse Polarity Protected
- Short Circuit Output Protected
- Input 110V/ 220V Auto Switch
- LED Charge Indicators Included
- Comes with Mains Lead
- Compliant to LVD & EMC safety standards
- RoHS & CE Directive Compliant



DC LeadAcid Battery Charger fitted with crocodile clips as standard
(It can specific by different cost)

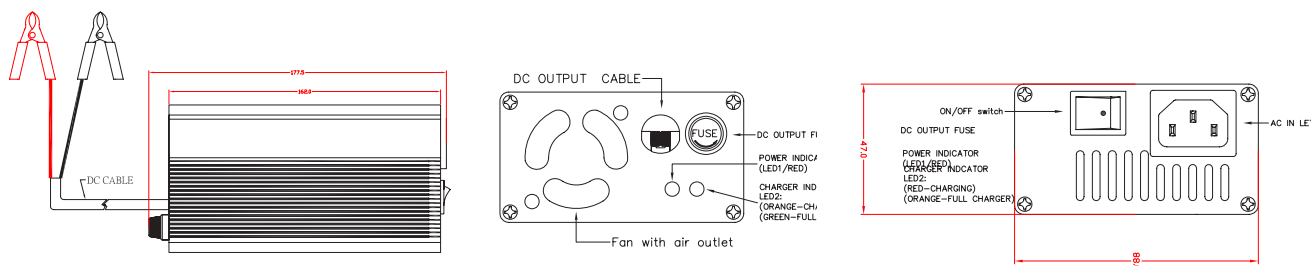
12V Models (Float voltage / Bulk Voltage Can Specific by Order)			
Model Number	Float Voltage	Bulk Voltage	Output Current
SE-11-0312A	13.7V	14.6V	3A
SE-11-0412A	13.7V	14.6V	4A
SE-11-0512A	13.7V	14.6V	5A
SE-11-0612A	13.7V	14.6V	6A
SE-11-0712A	13.7V	14.6V	7A
SE-11-0812A	13.7V	14.6V	8A
SE-11-1012A	13.7V	14.6V	10A
SE-11-1212A	13.7V	14.6V	12A

24V Models (Float voltage / Bulk Voltage Can Specific by Order)			
Model Number	Float Voltage	Bulk Voltage	Output Current
SE-11-0324A	27.4V	29.2V	3A
SE-11-0424A	27.4V	29.2V	4A
SE-11-0524A	27.4V	29.2V	5A
SE-11-0624A	27.4V	29.2V	6A
SE-11-0724A	27.4V	29.2V	7A

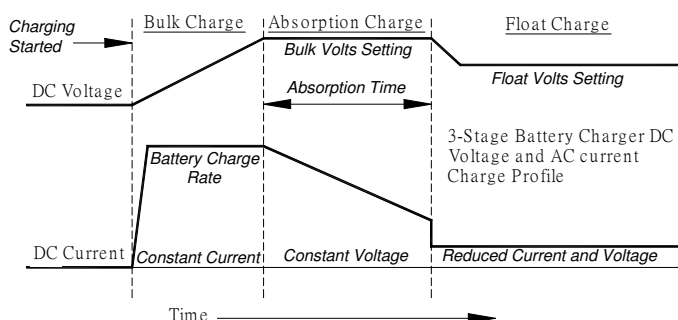
36V Models (Float voltage / Bulk Voltage Can Specific by Order)			
Model Number	Float Voltage	Bulk Voltage	Output Current
SE-11-0336A	41.1V	43.8V	3A
SE-11-0436A	41.1V	43.8V	4A

48V Models (Float voltage / Bulk Voltage Can Specific by Order)			
Model Number	Float Voltage	Bulk Voltage	Output Current
SE-11-0348A	54.8V	58.4V	3A

Mechanical Drawings



Charge Curve



Please advise following information for offering prices:

1. DC connector type
2. AC plug type
3. Battery Capacity
4. Expect Charging Time

VEHICLE ACCESSORIES

Net

SA-10-101

Car Storage Bag

- Lightweight & Versatile.
- Excellent for storage of bottles, towels.



SA-10-102

Automotive Tissue Holder

- Set on flat or hang it with strap.
- Adjustable for any size car headrest.
- Storage for standard tissue box.



SA-10-117

Cargo Organizer

Size: 52 cm x 31 cm x 23 cm (H)

Color: Black

Universal design fits most vehicles

Fold flat for storage when not in use.



SA-10-109

Elastic Luggage Net

Size: 5mm x 72" x 108" x 28 pcs plastic hook

Feature: • Rugged elastic net

- Spider web design secures bulky or odd shaped luggage
- Easy to fit and release to save loading time.



SA-10-107

Luggage Mat

Size: 51" x 53"

Fit all standard back seats

Feature: • Fit all standard back seats

- Keep your car clean from the pet's hair and mouth water etc
- Machine-washable cover makes it easy to care for and keep clean
- Easy installation and remove
- Adjustable straps with quick release buckles
- Seat belts slits in center to allow seat belts to be used when installed
- Hammock style car seat cover protects rear and behind front seat



SA-10-103

Auto Trash Can

- Size: 16cm x 16cm x 20.5cm
- Collapsible for any storage.
- It can be installed garbage bags and easy to clean up.
- It can be fixed its position with the Velcro.
- It only makes use of little space in the car.
- Black nylon trash can keep vehicle clean and organized.



SA-10-106

Overhead Space Net

Roof Flexible Luggage Net

Size: 40cm x 80cm

Caution: • Keep away from children, fire or Sharp objects.

- Washable, but do not bleach



Net

SA-10-110

Cargo Net

Suitable Model: Vans, SUVs and RV

Size: 70cm x 70cm

- Feature:
- Heavy duty
 - Universal model
 - Completely removable
 - Easy and quick installation

Function:

- Safety net

- Trunk storage net
- Dog net



SA-10-111

Cargo Net

Suitable Model: Vans, SUVs and RV

Size: 37cm x 110cm

Feature:

- Heavy duty
- Universal model
- Completely removable
- Easy and quick installation



SA-10-112(M/L)

Tailgate Net

Size & Suitable Model:

M: 38cm x 120cm, for full mini and midsize trucks

L: 45cm x 150cm, for full size trucks

Feature:

- Includes installation hardware

- Provides more rear visibility
- Sport styling improves the truck's appearance
- Added safety of greater rear visibility
- Improves gas mileage by reducing tailgate drag
- Resists fading, cracking and stretching



SA-10-113

Storage Basket

Suitable Model: Vans, SUVs & Trucks

Size: 30cm x 114cm (adjust from 48" to 60")

Feature:

- Easy installation to store when not in use
- Holds articles securely and conveniently in place.
- Flexible to fit around bulky items

Caution:

- Storage nets are not designed for use as a tailgate net
- This product is designed to restrain or hold lightweight items.



SA-10-116

Car Storage Bag

Size: 32cm x 23cm

Feature:

- Organize your driving needs.
- Keep everything a driver needs close at hand
- File pocket for papers, magazines, bottles, folders, CDs, travel mugs and more.
- Clear passenger space easily when you need it
- Easy to fix and remove it



SA-10-115

Laptop Stretch Band

Size: 20cm (width)

Feature:

- Suitable for all passenger's seat
- Ideal for securing laptops, handbags, books, newspaper, folders etc
- Keep stuffs in place while driving.
- Keep stuffs clean and handy



Car Appliance

SA-16-130

Seat Pocket Catcher (set of 2pcs)

Size: 37 x 3 x 10 cm

Material: PP

Feature: Easy to organize and collect in-car items, such as mobile phones, keys, coins, tablets, credit cards, receipts, magazines, cigarettes and glasses.



Sunshade

SA-16-108

Car Air Conditioning Saver

There're 3 sizes available:

SA-16-108S: 112cm x 90cm (for Sedan)

SA-16-108M: 127cm x 93cm (for RVs)

SA-16-108L: 137cm x 93cm (for Vans)

Content: • Transparent PVC film w/Polyester binding, elastic straps, and hooks
• 2 sets of strong magnets, 1 zipper bag

Feature: • Speed cool! Lower the temperature to 26°C in 3 minutes-energy-saving, fuel-efficient, safe, interior damage free.
• It can be unfold in 2 seconds and installed in 30 seconds.
• Use in any seasons. It can save energy when using A/C in summer, and keeps you warm and comfortable when using heater in winter.
• High quality Collapsible Galvanized Steel Wire is very easy to fold and unfold without breaking.
• Transparent PVC material provides safety and a chic look.
• Fixed with 2 strong magnets, the film won't sway.
• The storing is easy with our lightweight storage bag. It fits in the front seat back pocket and takes up little space.
• Awarded with Taiwan Golden Quality Award, Environmental Protection and Energy Saving Contribution Award, and National Quality Assurance Award.



Curtain

SA-16-150

DIY Heat Blocking Universal Car Curtain (Set of 2pcs)

S size: W50 x H36 ~ 39 cm

L size: W50 x H39 ~ 44 cm

Fabric color	Black Jersey
Pleat	Classic Single Pleat
Content	Curtain, Soft Upper Rail, Hard Bottom Rail, Alcohol Cotton Pad, Tieback, Runner, End Stop, End Cap
Packing	1 Set/Blister Card

Feature:

- High privacy
- Reduces glare
- Protect car interior from UV
- Elegant & noble decoration
- Pleats as exquisite as house curtains, looks beautiful both from the inside and the outside
- Embroidered tiebacks with your company/brand name
- Patented soft curtain track can bend to apply on the car window curves
- Soft runners won't slide & rattle while the car's moving
- Quality double sided tape
- Eco-friendly dope dyed fabric, outstanding color fastness to light



* Because of the different display of each computer, the pictures and objects will be slightly different. We can provide fabric samples for your reference.

Advantages & Usages

Designed to eliminate the harmful effects of sunlight inside the car and keep the car cool even in the hottest weather conditions. Can filter out harmful ultraviolet rays, and limit the amount of sunlight entering the car. This saves energy because it reduces the need for air conditioning, but it also means that the interior of your car can be kept longer.

Of course, in addition to blocking the sun, it also avoids the possibility of others looking at your car and seeing what you are doing-it provides privacy, but at the same time allows you to see the world around you. Our fabric shades can protect your babies, children, passengers and pets from sun glare and heat in the front and rear seats. The window sunshade protects the privacy of your car.

This car curtain is durable, efficient and value for money.

Images for reference:



In car type

SB-11-208

Universal Pet Barrier

Suitable Model: For most of vehicles of inside of SUVs, MPVs, RV

Material: Steel with Black Powder Coating

Size: Expand 45" height and 65" wide

- Feature:
- Provide safe driving by keeping your pets away from driver's seat.
 - Keep your pets safety behind the barrier.
 - Protective brace pads won't damage vehicle interior.
 - Adjustable design: height 31"-45"; width 39"-65"
 - Easy to install and remove.
 - Fit most SUVs, vans or wagons.



SB-11-209

Cargo Bar 40" – 74" + NET

Cargo bar material: Steel

Cargo bar finish: Durable Gray

Hammertone Powder coating



SB-16-210 (34cm-58cm)

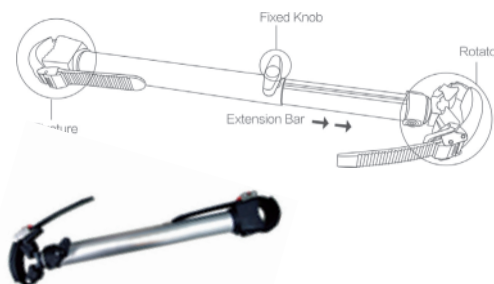
SB-16-211 (22cm-34cm)

SB-16-212 (16cm-23cm)

Extensible Frames Adapter

Material: 6063 lightweight Aluminum Alloy

- Feature:
- It can be adjustable, and depends on how length you need
 - Adjustable angle 360 degree on tip
 - Strongly construction



Roof Type Series

SB-11-103

Universal Roof Cross Bar

Suitable Model: For without rails and fits many Sedans, SUVs and Vans.

Material: Steel with Durable Gray Hammertone Powder Coat Finish.

Max Load: 50 kgs

- Feature:
- Fit cars with aerodynamic
 - Fit most of cars vans with or without rain gutter.
 - Adjustable steel bars expand from 45" to 60"
 - Non-mar rubber feet and coated hooks will not scratch paint.
 - Adjustable lashing straps included.



SB-11-104

Universal Roof Cross Bar

Fix by Rain Gutter Mounted

Suitable Model: For without rails, for cars with manufacturers' roof rails and fit many Sedans, SUVs and Vans.

Material: Steel with Black Powder Coating

Max Load: 50 kgs

- Feature:
- Fit most vehicles.
 - Secure with rain gutter without drilling.
 - Designed for a smooth roof without rails or bars
 - Completely removable and easy to install.
 - Mounting accessories all included.



SB-11-105

Universal Roof Cross Bar

Fix by Rain Gutter Mounted

Suitable Model: For without rails and fits many Sedans, SUVs and Vans.

Material: Steel with Black Powder Coating

Max Load: 50kgs

- Feature:
- Fit most vehicles
 - Secure with rain gutter without drilling.
 - Designed for a smooth roof without rails or bars
 - Completely removable and easy to install
 - Mounting accessories all included



SB-16-101(125 cm) / SB-16-102(145 cm)

Aluminum Universal Roof Cross Bar

Suitable model: Fit for general vehicles for those without supporting rack or points at rooftop

Material: 6063 lightweight Aluminum Alloy

Max Load: 80 kgs

Certification: ARTC

- Feature:
- With multi-type hooks, can be applicable to different type of vehicles.
 - Strongly construction.
 - Easy and quick for installation.
 - Light weight for easily carrying & installing.
 - Smoothly handing feeling for finish & bolt, rubber (accessories)
 - No tools required after the first installed.



Available hook style images for reference

K1S

K2

K7A

K11

Optional Accessories: SB-16-103

Roof Type Series

SB-16-101B (125 cm) Black

SB-16-102B (145 cm) Black

Aluminum Universal Roof Cross Bar

Suitable model: Fit for general vehicles for those without supporting rack or points at rooftop

Material: 6063 lightweight Aluminum Alloy

Max Load: 80 kgs

Certification: ARTC

- Feature:
- With multi-type hooks, can be applicable to different type of vehicles.
 - Strongly construction.
 - Easy and quick for installation.
 - Light weight for easily carrying & installing.
 - Smoothly handing feeling for finish & bolt, rubber (accessories)
 - No tools required after the first installed.

Optional Accessories: SB-16-103



SB-16-103

Knobs with Lock (4pcs/set)

Suitable model: Fits for above 4 Roof Cross Bar

SB-16-101 (125 cm) / SB-16-102 (145 cm)

SB-16-101B (125 cm) Black / SB-16-102B (145 cm) Black



- Feature:
- Vehicle to bike carrier is lockable.
 - To prevent the bike carrier from being stolen

SB-16-107 (110 cm) / SB-16-108 (125 cm)

Aluminum Universal Roof Cross Bar

Suitable model: For with vertical rails of vehicles, and it should be 2.5 cm gap between vertical rails and roof.

Max Load: 45 kgs

Material: 6063 lightweight Aluminum Alloy

Certification: ARTC

- Feature:
- Easy and quick for installation.
 - Light weight for easily carrying & installing.
 - Smoothly handing feeling for finish & bolt, rubber (accessories)
 - Strongly construction.



SB-10-101

Aluminum Universal Roof Cross Rack with Keys

Suitable model: For with roof side rails and fit many Sedans, SUVs and Vans, compatible with side rails width within 80mm

Length: 127cm

Max Load: 70 kgs



SB-10-101A-127K
Aero Wing Cross Bar
with Lock

SB-10-101E-127K
Edge Cross Bar
with Lock

Roof Type Series

SB-10-205

Roof Surf Carrier – 4pcs/set

Suitable Model: For all type of roof cross bar

Material: Steel & Plastic

- Feature:
- Cradles and straps protect the surfboard
 - Maintains transport stability
 - Easy mounting
 - Carries up to 2 surfboards



SB-10-207

Roof Kayak Carrier – 4pcs/set

Suitable model: For all types of roof cross bars

Material: Steel & Plastic

- Feature:
- Four rubber pads protect kayak hull
 - Maintains transport stability.
 - Easy mounting.
 - Fit surfboard, canoe or small boat as well



SB-11-101 & SB-11-102

High-quality Roof Ski Rack

Suitable model: For cars, vans, SUVs

Material : Aluminum for Body with Rubber and Steel for Accessory

- Feature:
- Soft rubber straps grip skis and snowboards without scratch or damage
 - Dual locking mechanism keeps skis or snowboards secure while traveling
 - Oversized push button allows easy release of skis or snowboards
 - Universal mount fits most cross bars

SB-11-101 For 4 Pairs

Holds up to 4 pairs of skis or 2 snowboards

Size: 25 $\frac{3}{4}$ " L x 3" W x 6 $\frac{1}{4}$ " H

SB-11-102 For 6 Pairs

Holds up to 6 pairs of skis or 3 snowboards

Size: 34 $\frac{3}{4}$ " L x 3" W x 6 $\frac{1}{4}$ " H



SB-10-206

Roof Kayak Carrier

Suitable model: For all types of roof cross bars

Material: Steel & Plastic

- Feature:
- Carries 1 kayak
 - Fold down when not required
 - Space saving and easy mounting
 - W/foam padding to protect kayak
 - Space saving and easily mounted
 - With quick release



SB-10-216

Roof Kayak Carrier

Suitable model: For all types of roof cross bars

Material: Steel & Plastic

- Feature:
- Carries 2 kayaks
 - Fold down when not required
 - Space saving and easily mounted
 - W/foam padding to protect kayak
 - With quick release



Roof Type Series

SB-18-100

Roof Rack

Suitable model: Fits roof of vehicle with roof bar

Material: Steel

Size: 120 x 120 cm

Enclosed clamp for connect to roof bar



SB-18-102

Roof Rack with Spoiler

Suitable model: Fits roof of vehicle with roof bar

Material: Steel

Size: 120 x 120 cm

Enclosed clamp for connect to roof bar



SB-18-104

Roof Rack with Spoiler

Suitable model: Fits roof of vehicle with roof bar

Material: Steel

Size: A - 120 x 120 cm

B - 100 x 120 cm

Enclosed clamp for connect to roof bar



SB-18-106

Roof Rack

Suitable model: Fits roof of vehicle with roof bar

Material: Aluminum

Size: A - 100 x 120 cm

B - 83 x 120 cm

Enclosed clamp for connect to roof bar



SB-42-100

Railed Cargo Carrier

Suitable Model: For roof of vehicle with roof bar

Material: Steel with black coating. Smoothly finish

Size: (a). S: length 960 x width 960 x height 120 mm

(b). M: length 960 x width 1100 x height 120 mm

(c). L: length 960 x width 1250 x height 120 mm



SA-10-104

Roof Flexible Luggage Net

Suitable model: Railed Cargo Carrier

Size: (a). S: 4mm x 30" x 30" x 12 pcs plastic hooks

(b). M: 4mm x 30" x 35" x 12 pcs plastic hooks (SB-42-104)

(c). L: 4mm x 40" x 45" x 12 pcs plastic hooks

Material: (a). Net: Rubber + PP

(b). Hook: Plastic



Hitch Type Series

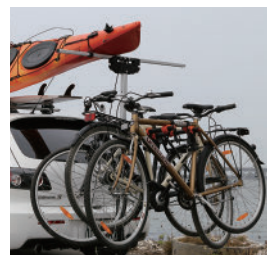
SB-10-208A/SB-10-208B

Hitch Mount Long Loads Assist Carrier & Bike Carrier

Material: Aluminum & Steel

Max load: 45 kgs/carries up to 3 bikes

- Feature:
- Carries long loads, water sport equipment & bike together
 - Designed specifically to cater for different types of cars & pick-up trucks.
 - Adjustable load bars could hold different sizes of long loads, ladders, water sports equipment such as kayaks, canoes, boats and paddle boards.
 - Maintains transport stability.
 - Foldable type, easy storage, space saving, easy mounting.
 - Patent Issue



SB-10-208A

Fits 32 & 50mm hitch receiver

SB-10-208B

Fits 50mm tow ball



Roof Type Series

SB-10-211

Wheel Step

Max Load: 200 kg

- Feature:
- Foldable type, easy storage, space saving
 - Adjustable height
 - Fit most vehicle tires



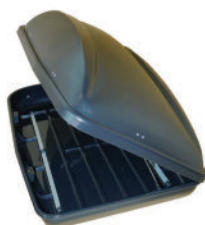
SA-11-101A

Roof Box

Right Side Open

Size: 145 x 90 x 42 cm

Packing: 1 CTN/19.9 cube feet



SA-11-101B

Roof Box

Rear Open

Size: 145 x 90 x 42 cm

Packing: 1 CTN/19.9 cube feet



SA-11-103A

Roof Box

Right Side Open

Size: 125 x 75 x 32 cm

Packing: 1 CTN/12.3 cube feet



Rear Type Series

SB-16-203 (Box Carrier) Rear Mounted Aluminum Alloy Carrier

Suitable model: For MPV, RV, SUV

Material: 6063 lightweight Aluminum Alloy

Max load: 30 kgs/carries up to 2 bikes.

Certification: TUV/CHC

Feature:

- Adjustable platform for position, will not cover rear light & number plate.
- Quick & easy design for ratchet.
- No additional tools required.
- Platform can be easily folded and storage.
- Special rubber for vehicles protection.
- Polished for smooth finish for hand feeling.
- Convenient bike loading with wheel straps.

Caution: Non-suitable for fiberglass rear door and large spoiler.



Healthy Appliance

SB-10-230 Wheelchair Carrier for Disability

Suitable Model: Fit on Sedan, RV, Hatchback and SUV

Material: Aluminum Wheel Tracks, Steel Tube and Plastic

Max Load: 20 Kgs/Carries Up to 1 Wheelchair

Advantages

Adjustable Quick Release Hub and Suitable for Sedan, RV, Hatchback and SUV With Lock

Easy Mounted and Quite Convenient



Key Features

The rear wheelchair carrier is designed because of disability of the elderly people. It is not convenient to take a wheelchair carrier out, so the wheelchair rack design idea came out to make go out and travel easier, and save space inside car. Welcome to contact us for detailed information of this wheelchair carrier for car.

Product Invention Story

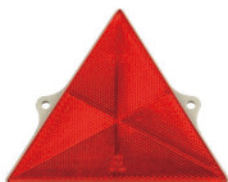
Since the disability of mother, she needs wheelchair everywhere. However, the wheelchair is not easy to carry out. This wheelchair carrier is prompted by this reason and the filial duty of the inventor. After design and manufacturing, now the inventor can go out and travel with his mother easily with convenience.

Trailer Lamp

SP-10-101

Triangle Plate

Size: each length 167cm
Certificate passed: VSCC, CCC, ECE



SP-10-102

Side Reflecting Lamp

Suitable model: 12V ~ 24V
Size: 110 mm x 36 mm x 19 mm
Certificate passed: VSCC, ECE



SP-10-103

Front Reflecting Lamp

Suitable model: 24V
Size: 104 mm x 53 mm x 28 mm
Certificate passed: VSCC, ECE



SP-10-104

Lisense plate Lite

Suitable model: 12V ~ 24V
**Australia exclusive



Lead Acid Battery

SE-15-100

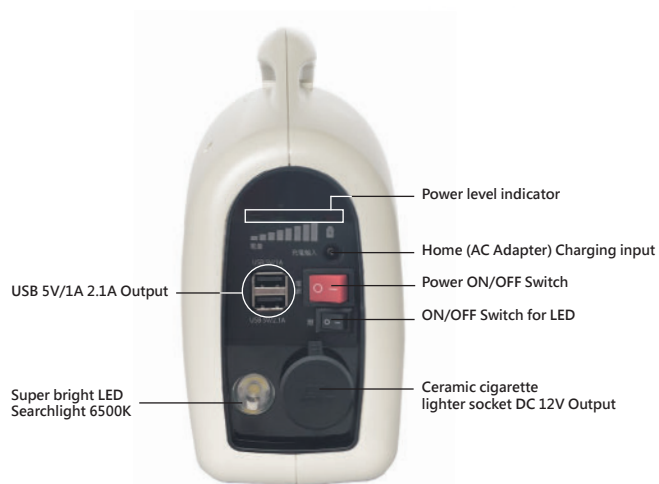
Super.Power - Lead Acid Battery (Yuasa Battery)

Output voltage: DC 12V
Battery capacity: 12V 10AH Lead acid
Output power: DC 12V ; DC 5V 1A/2.1A
Weight: 4 KG
Size: L 27 x W 10 x H 22 (CM)
Charging time: 9~11 hours (indoor) ;
2~3 hours (vehicle)

CE FC RoHS



Include Accessories



CAR HUB BOLT

OE No. 9-42331-601-1 / 9-42331-601-0
mitsubishi L300 Hub Bolt
 M12P1.5*14.3*46.3L



OE No. 90942-02052 / 90942-02053
TOYOTA 4*4 Hub Bolt
 M12P1.5*14.25*58L



OE No. 40222-B6000 / 40222-A0800
NISSAN 510 Hub Bolt
 M12P1.25*12.8*44L



OE No. 40222-70T00 / 40222-0B005 / 40222-C6000
NISSAN 331 Hub Bolt
 M12P1.25*14.3*45L



OE No. 90113-SAO-015 / 90113-SAO-023 / 90113-SAO-025
HONDA 16V K6, K8 Hub Bolt
 M12P1.5*12.3*43L



OE No. 90942-02034 / 90942-02079 / 90942-02081
TOYOTA Series Hub Bolt 49L
 M12P1.5*14.3*49L



OE No. 90942-02035 / 90942-02014 / 90942-02036 / 90942-02047
TOYOTA Series Hub Bolt
 M12P1.5*14.3*43L



CAR LUG NUT

OE No. MR455707 MITSUBISHI LANCER Lug Nut
OE No. 90942-01033 / 90942-01083 TOYOTA Lug Nut
 12P1.5*21*38



OE No. 90942-01021 / 90942-01059 / 90942-01104
TOYOTA Lug Nut
 12P1.5*21*29



OE No. 90304-SA5-003 / 90304-SAO-981 / 90304-SAO-003
HONDA CIVIC 16V Lug Nut
 12P1.5*19*35



OE No. 90942-01001 / 90942-01007
TOYOTA 12P1.5 Wheel Nut RH
 12P1.5*21*16



OE No. 40224-21001
NISSAN Wheel Nut
 Size: M12P1.25*21*16



OIL DRAIN PLUG

OE No. SP-20-PBO001-1
Oil Drain Plug M14P1.5 W/O Sump Plate



SP-20-PBO003
Oil Drain Plug M16P1.5 W/Sump Plate



SWINGING ARM BOLT

SP-20-PBF010
mitsubishi LANCER Rear / VIRAGE Swinging Arm Bolt



HEAVY-DUTY VEHICLE HUB BOLT

SP-20-PWSA0012-7

BPW12T (Tooth Modified) Hub Bolt RH



SP-20-PWSA0052

IVECO Rear Hub Bolt 100L RH



SP-20-PWSA0055-9

VOLVO 2005 Front Hub Bolt
79L RH (Disc Brake)



SP-20-PWSA0055-90

VOLVO 2005 Rear Hub Bolt
97L RH (Disc Brake)



STEEL WHEEL NUT

SP-20-PWNA0001 RH / SP-20-PWNA0001-1 LH

M30P1.5 (HINO KB) Inner & Out Nut RH/LH



PIN

SP-20-PPA0015

ISUZU KS Front Leaf Spring Pin



SP-20-PPA0016

ISUZU KS Rear Leaf Spring Pin



SP-20-PPA064

FUSO CANTER 6.8 Leaf Spring Pin



DRIVE SHAFT BOLT

SP-20-PBT021

TOYOTA 14B / 15B Front Drive Shaft Bolt



SP-20-PBT022

TOYOTA 15B Rear Drive Shaft Bolt



GREASE FITTING

SP-20-PA311

Grease Fitting (6mm Straight)



SP-20-PA312-5

Grease Fitting (10mm 90 Degree)



VEHICLE ACCESSORIES

SA-17-101 Hitch Pin Lock

5/8" Pin
Capacity length 70mm
2 flat key
Chrome Finish



SA-17-102 Hitch Pin Lock

5/8" Pin
Capacity length 70mm
2 flat key
Chrome Finish
Feature: Pin can be locked without the key



SA-17-105A Hitch Ball Cover

1-7/8" & 2"



SA-17-105B Hitch Ball Cover

2-5/16"



SA-17-103 Receiver Cover

For 2" x 2" receiver
With 2.5 mm hex key
Black ABS



SA-17-104 Receiver Cover

For 2" x 2" receiver
With 2.5 mm hex key
ABS with chrome finish



SA-17-105C Hitch Ball Cover

2-5/16"
With adapter cover



SA-15-101 Hitch Shackle

Material: Aluminum Alloy



SA-15-102 Hitch Shackle with Lock

Material: Aluminum Alloy



SA-17-105D Hitch Ball Cover

1-7/8" & 2"
With adapter cover



SA-15-103 Coupler

Material: Aluminum Alloy
1-7/8" & 2"



SA-15-104 Coupler

Material: Aluminum Alloy
1-7/8" & 2"



SA-15-105 2" Hitch

Material: Aluminum Alloy



SA-17-106 5/8" Receiver Pin with Safety Clip



SA-17-111 5/8" Hitch PIN, steel with Chrome Plated



SA-17-107 Cable with Hook and Thimble

Withstand 8000 LB.
Cable size: 10 mm x 100 cm L



SA-15-106 2" Tow Ball

Material: Steel



SA-15-107 Keys Type Pin

Material: Steel



SA-17-108 5/8" hitch receiver lock + 10mm*360cm cable



SA-17-112 COUPLER LOCK, Brass



SA-17-113 COUPLER LOCK, zinc alloy with black powder coating,



SA-17-114 5/8" Hitch Pin Capacity length 70mm 2 flat key Stainless steel



SA-17-115 5/8" Receiver Pin Chrome Plated



SLEEVE NUT

SLEEVE NUT for Heavy duty Truck/Towed Truck/Bus

Key Feature:

The sleeve nuts are made from heat treatment of steel which is quite strong. The hardness of nuts is 10.9 grade. They are suitable for heavy duty truck, towed truck and bus to protect the wheel bolt and let the location of installation be fixed easily. They are super shiny and beautiful. You can choose different specs for the front and rear wheels. Contact us now for further quotation.

Advantages:

- The body of nut and washer are made of special steel and are heat treated.
- The strength of nut is 10.9 grade.
- The shank/sleeved nut design protects the wheel bolt and let the location of installation be fixed easily.



Item no.	Thread Size	Front/Rear Wheel	Side of Thread	Mounting	Workable Truck/ Bus Brand	Photo
SP-20-001FRRH	M22P1.5 For 32mm Stud Hole	Front	RH Thread	Hub Piloted	MAN, DAF, Renault, IVECO, HINO, FUSO, VOLVO (FM12)	
SP-20-001RRRH	M22P1.5 For 32mm Stud Hole	Rear	RH Thread	Hub Piloted		
SP-20-003FRRH	7/8-11 UNC For 32mm Stud Hole	Front	RH Thread	Hub Piloted	SCANIA	
SP-20-003RRRH	7/8-11 UNC For 32mm Stud Hole	Rear	RH Thread	Hub Piloted		
SP-20-005FRRH	7/8-14 UNF For 32mm Stud Hole	Front	RH Thread	Hub Piloted	VOLVO (FL10)	
SP-20-005RRRH	7/8-14 UNF For 32mm Stud Hole	Rear	RH Thread	Hub Piloted		
SP-20-021FRRH	M20P1.5 For 32mm Stud Hole	Front	RH Thread	Hub Piloted	HINO, FUSO	
SP-20-021FRLH	M20P1.5 For 32mm Stud Hole	Front	LH Thread	Hub Piloted		
SP-20-021RRRH	M20P1.5 For 32mm Stud Hole	Rear	RH Thread	Hub Piloted	HINO, FUSO	
SP-20-021RRLH	M20P1.5 For 32mm Stud Hole	Rear	LH Thread	Hub Piloted		
SP-20-023FRRH	M24P1.5 For 32mm Stud Hole	Front	RH Thread	Hub Piloted	Japanese Heavy-Duty Truck: Isuzu, Fuso, Hino, Nissan	
SP-20-023FRLH	M24P1.5 For 32mm Stud Hole	Front	LH Thread	Hub Piloted		
SP-20-101FRRH	M22P1.5 For 26mm Stud Hole	Front	RH Thread	Hub Piloted	MAN, DAF, Renault, IVECO, HINO, FUSO, VOLVO (FM12)	
SP-20-101RRRH	M22P1.5 For 26mm Stud Hole	Rear	RH Thread	Hub Piloted		



Sunny Technologies Co.,Ltd.

11F-3, No. 2, Ln. 212, Sec. 3, Heping E. Rd., Da'an Dist.,
Taipei City 10674, Taiwan

Tel: 886-2-27352298 Fax: 886-2-27330076

<http://www.sunnytec.com>